

## What's New

---

Essential Studio Business Intelligence Edition



## Table of Contents

BI Chart for WPF.....	3
Calculated Members .....	3
Designer Support .....	4
BI Grid for WPF.....	6
Member Properties in a Grid .....	6
Calculated Members .....	6
Designer Support .....	7
BI PivotGrid for WPF .....	9
New Control .....	9
Filtering .....	9
Sorting.....	10
BI Grid for ASP.NET .....	11
Member Properties in Grid .....	11
Calculated Members .....	11
BI Grid for Silverlight .....	12
Member Properties in a Grid .....	12
Calculated Members .....	12
BI Client for ASP.NET and WPF .....	13
Report as a Stream.....	13

## BI Chart for WPF

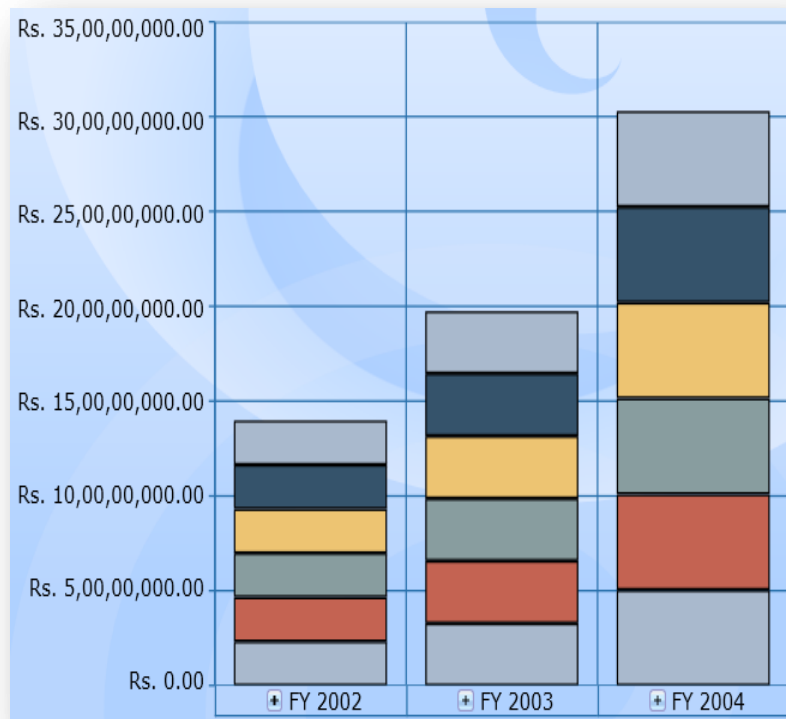
---

### *Calculated Members*

Essential BI Chart displays user-defined dimensions and measures with a newly added API, which defines and adds the dimensions and measures.

Calculated Members are classified into two types: **Calculated Measure** is a user-defined measure element created from an existing measure element; **Calculated Dimension** is a user-defined dimension element created from an existing dimension.

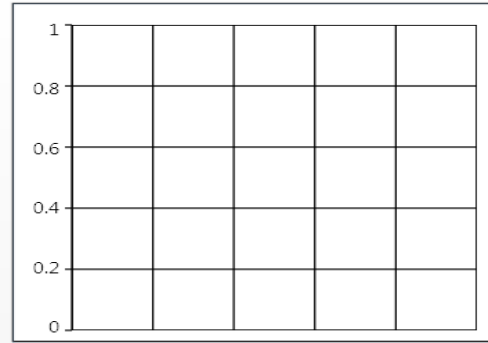
You can also create new calculated members from existing calculated members, and load a report with calculated members in OlapChart.



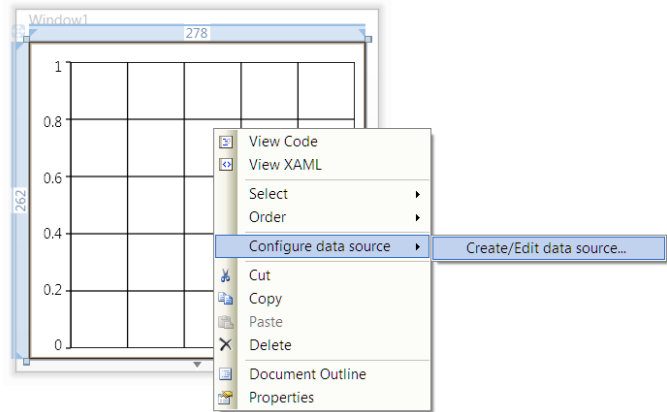
***OlapChart with Calculated Members***

## Designer Support

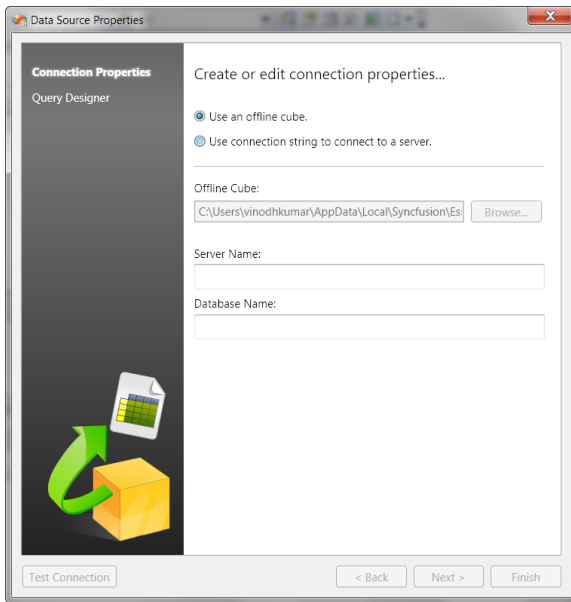
OlapChart supports customizing a control during design time using VS 2008 or VS 2010. Users can easily connect to a cube with the Connection dialog and customize a report by dragging and dropping dimensions and measures to and from the report.



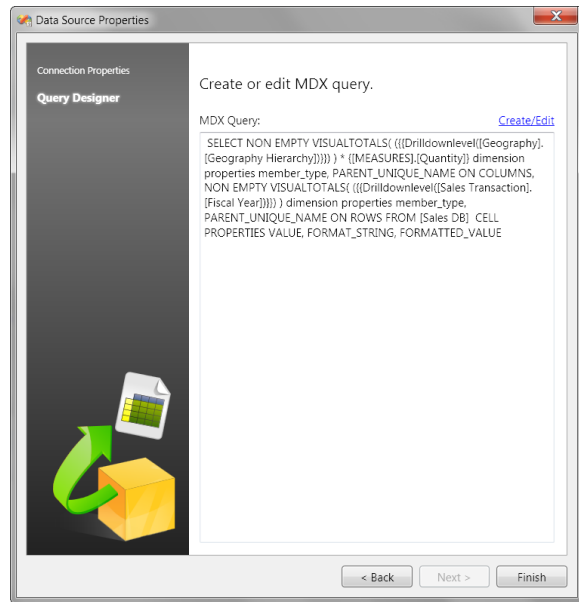
**OlapChart in Visual Studio**



**OlapChart Context Menu**

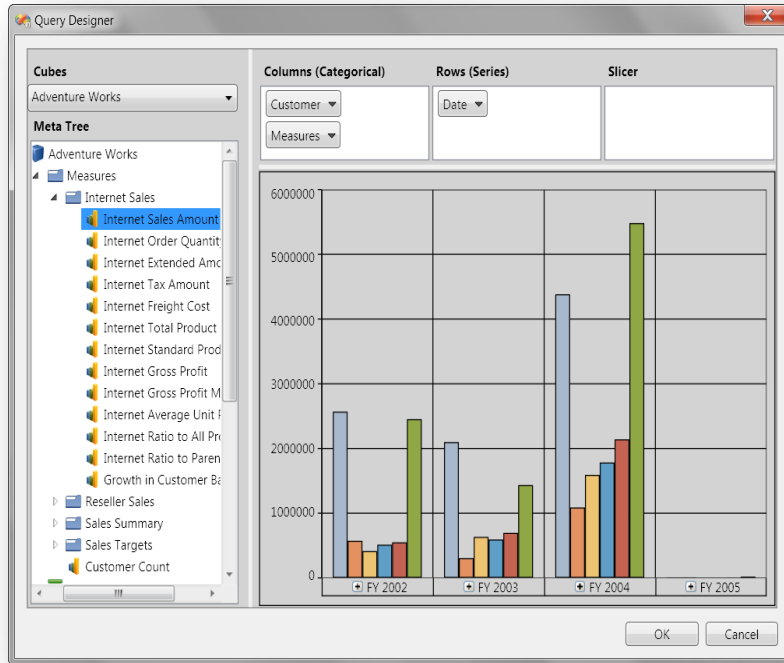


**Customizing Connection Properties**



**Query Designer with MDX Query**

# What's New for 2010 Volume 3: Essential Studio Business Intelligence



**GUI-Based Query Designer (Query Editor)**

**BI Grid for WPF**

*Member Properties in a Grid*

Essential BI Grid provides an option for displaying member properties, which provide basic information about each member in a tuple, including member name, parent level, number of children, and so on. Member properties are available for all members at a given level.

	Gender	Marital Status	Email Address	Sales Amount Quota
Ken J. Sánchez	Male	Single	ken0@adventure-works.com	\$112,745,950.00
Brian S. Welcker	Male	Single	brian3@adventure-works.com	\$112,745,950.00
Amy E. Alberts	Female	Married	amy0@adventure-works.com	\$23,077,600.00
Jae B. Pak	Female	Married	jae0@adventure-works.com	\$12,547,100.00
Rachel B. Valdez	Female	Single	rachel0@adventure-works.com	\$3,269,800.00
Ranjit R. Varkey Chudukatil	Male	Single	ranjit0@adventure-works.com	\$7,260,700.00
Stephen Y. Jiang	Male	Married	stephen0@adventure-works.com	\$87,336,050.00
Syed E. Abbas	Male	Married	syed0@adventure-works.com	\$2,332,300.00
Lynn N. Tsoulias	Female	Single	lynn0@adventure-works.com	\$2,332,300.00
Grand Total				\$112,745,950.00

*OlapGrid with Member Properties*

*Calculated Members*

OlapGrid can display user-defined dimensions and measures through a newly added API, which is used to define and add the measures.

Calculated members are classified into two types: **Calculated Measure** is a user-defined measure element created from an existing measure element; **Calculated Dimension** is a user-defined dimension element created from an existing dimension

Users can also create a calculated member from an existing calculated member, and load reports with calculated members in an OlapGrid.

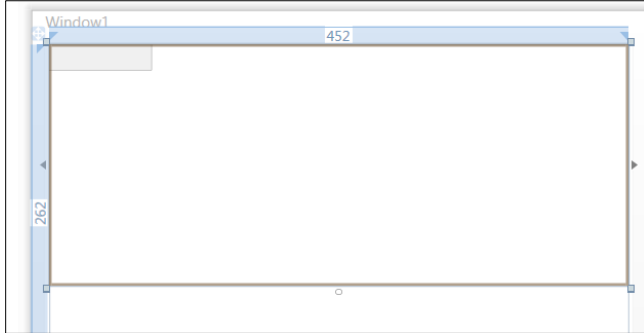
	Australia		Canada		France	
	Sales Range	Internet Sales Amount	Sales Range	Internet Sales Amount	Sales Range	Internet Sales Amount
FY 2002	High	\$2,568,701.39	High	\$573,100.97	High	\$414,245.32
FY 2003	High	\$2,099,585.43	High	\$305,010.69	High	\$633,399.70
FY 2004	High	\$4,383,479.54	High	\$1,088,879.50	High	\$1,592,880.75
FY 2005	Low	\$9,234.23	Low	\$10,853.70	Low	\$3,491.95
Total	High	\$9,061,000.58	High	\$1,977,844.86	High	\$2,644,017.71

*OlapGrid with Calculated Members*

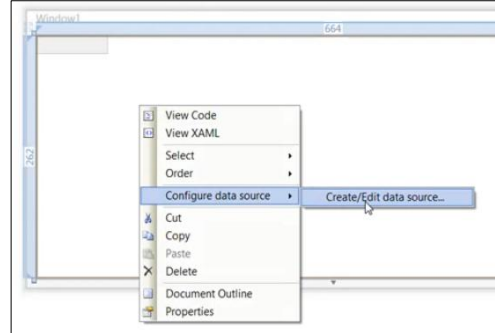
# What's New for 2010 Volume 3: Essential Studio Business Intelligence

## Designer Support

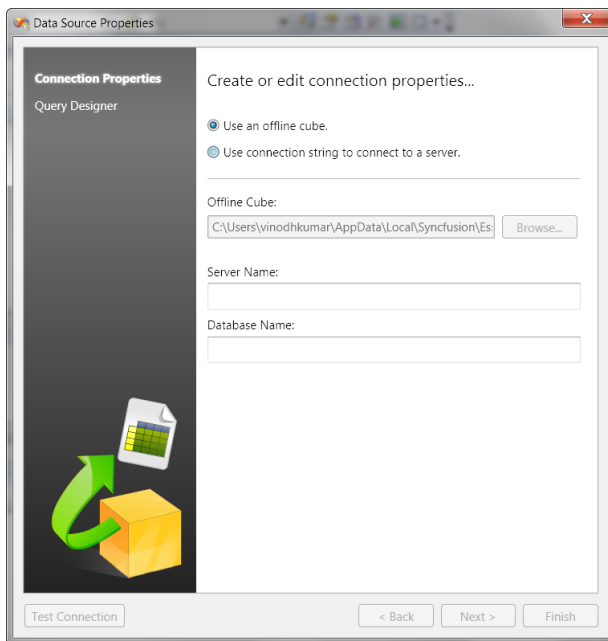
OlapGrid supports customizing a control during design time using VS 2008 or VS 2010. Users can easily connect to a cube with the Connection dialog and customize a report by dragging and dropping dimensions and measures to or from the report.



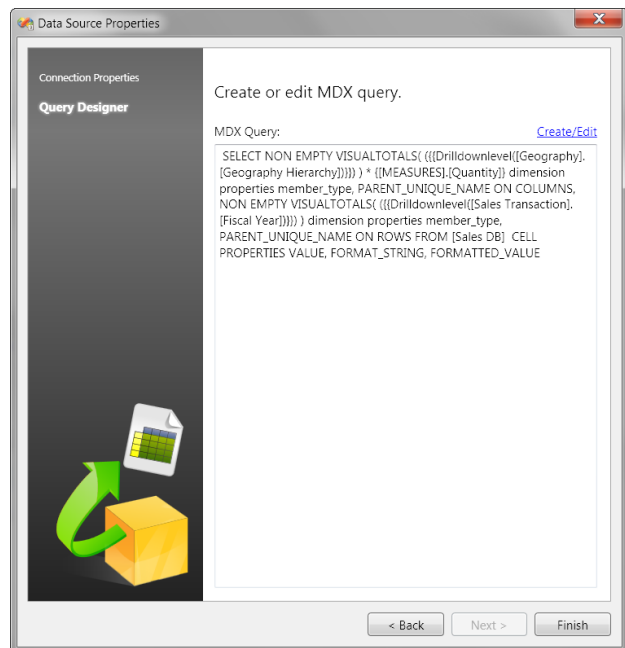
**OlapGrid in Visual Studio**



**OlapGrid Context Menu**

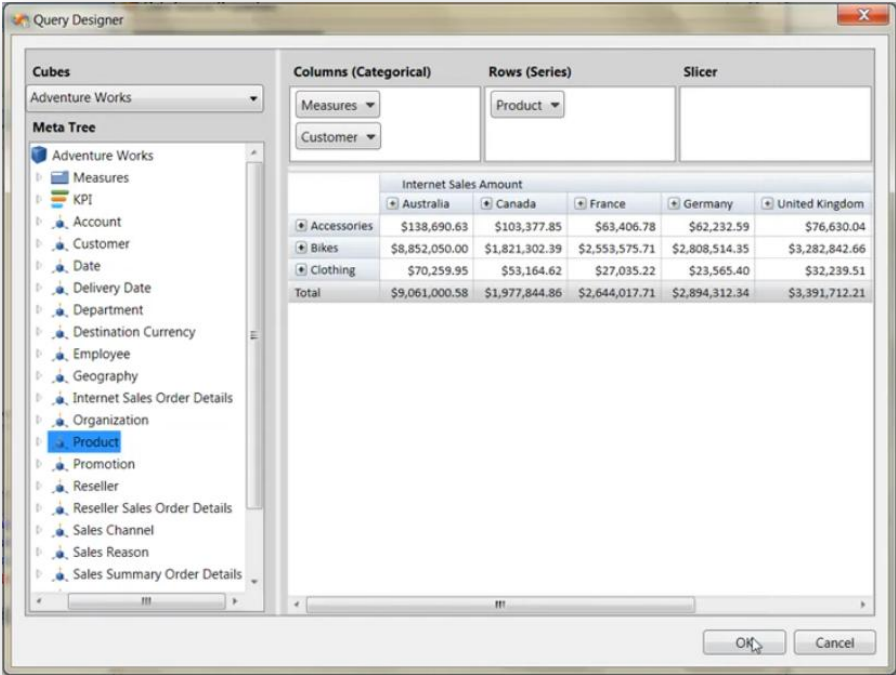


**Customizing Connection Properties**



**Query Designer with MDX query**

What's New for 2010 Volume 3: Essential Studio Business Intelligence



GUI-based Query Designer (Query Editor)

**BI PivotGrid for WPF**

*New Control*

Essential PivotGrid for WPF is a powerful, extensible cell-oriented grid control simulating the pivot-table feature of Microsoft Excel. The PivotGrid, as the name implies, pivots data to organize it in a cross-tabulated form. The major advantage with a pivot grid is that you can extract the desired information from a large list within seconds. Along with presenting data, a pivot grid also enables you to summarize and group data. Its main application can be found in the financial domain, where it is used to organize and analyze business information.

**Key Features**

Important features of the PivotGrid control are listed below:

- Multilevel drilling up and drilling down—row drill-down, column drill-down, multilevel row/column drill-down
- Data-binding support
- Auto-calculation of total summaries
- Filters
- Grouping support
- Sorting

		Canada		France		Germany		United Kingdom		United States		Grand Total	
		Amount	Quantity	Amount	Quantity	Amount	Quantity	Amount	Quantity	Amount	Quantity	Amount	Quantity
Bike	FY 2005	\$32,575,200.00	191	\$33,292,200.00	198	\$30,714,000.00	179	\$28,980,600.00	178	\$31,102,800.00	187	\$156,664,800.00	933
	FY 2006	\$15,625,200.00	86	\$10,742,700.00	71	\$12,546,600.00	71	\$11,745,600.00	72	\$9,078,600.00	67	\$59,738,700.00	367
	FY 2007	\$7,337,400.00	43	\$5,133,900.00	31	\$6,322,200.00	35	\$7,012,200.00	42	\$8,146,800.00	46	\$33,952,500.00	197
	FY 2008	\$3,365,400.00	21	\$3,040,500.00	19	\$5,042,400.00	29	\$2,756,100.00	21	\$4,911,900.00	29	\$19,116,300.00	119
	FY 2009	\$1,123,200.00	8	\$2,210,400.00	12	\$1,496,100.00	12	\$2,202,900.00	16	\$1,569,600.00	11	\$8,602,200.00	59
	<b>Bike Total</b>		\$60,026,400.00	349	\$54,419,700.00	331	\$56,121,300.00	326	\$52,697,400.00	329	\$54,809,700.00	340	\$278,074,500.00
Car	FY 2005	\$6,252,000.00	38	\$6,500,400.00	37	\$5,163,300.00	31	\$6,471,900.00	40	\$5,125,200.00	33	\$29,512,800.00	179
	FY 2006	\$3,195,000.00	17	\$2,878,500.00	18	\$2,405,700.00	13	\$1,340,400.00	9	\$1,600,200.00	10	\$11,419,800.00	67
	FY 2007	\$1,491,000.00	8	\$1,017,900.00	6	\$1,574,400.00	7	\$1,523,100.00	9	\$2,368,200.00	13	\$7,974,600.00	43
	FY 2008	\$905,100.00	5	\$647,700.00	4	\$936,000.00	5	\$1,062,600.00	8	\$914,700.00	5	\$4,466,100.00	27
	FY 2009	\$0.00	0	\$285,000.00	2	\$483,300.00	4	\$87,300.00	1	\$337,800.00	2	\$1,193,400.00	9
	<b>Car Total</b>		\$11,843,100.00	68	\$11,329,500.00	67	\$10,562,700.00	60	\$10,485,300.00	67	\$10,346,100.00	63	\$54,566,700.00
<b>Grand Total</b>		\$71,869,500.00	417	\$65,749,200.00	398	\$66,684,000.00	386	\$63,182,700.00	396	\$65,155,800.00	403	\$332,641,200.00	2,000

**PivotGrid Control**

*Filtering*

Filters are automatically reapplied every time the PivotGrid is refreshed or updated. In the PivotGrid, filters are additive, which means that each additional filter is based on the current filter, further reducing the subset of data. You can apply *n* number of filtering conditions to the grid at a time.

## What's New for 2010 Volume 3: Essential Studio Business Intelligence

		Canada						Canada Total		Grand Total	
		Alberta		British Columbia		Brunswick					
		Amount	Quantity	Amount	Quantity	Amount	Quantity	Amount	Quantity	Amount	Quantity
Bike	FY 2005	\$5,409,300.00	34	\$4,605,600.00	29	\$6,063,300.00	35	\$16,078,200.00	98	\$16,078,200.00	98
	FY 2006	\$1,695,900.00	11	\$2,647,200.00	15	\$3,162,600.00	17	\$7,505,700.00	43	\$7,505,700.00	43
	FY 2007	\$1,126,500.00	6	\$1,549,200.00	8	\$1,189,500.00	6	\$3,865,200.00	20	\$3,865,200.00	20
Bike Total		\$8,231,700.00	51	\$8,802,000.00	52	\$10,415,400.00	58	\$27,449,100.00	161	\$27,449,100.00	161
Car	FY 2005	\$1,410,300.00	8	\$1,482,900.00	10	\$304,500.00	2	\$3,197,700.00	20	\$3,197,700.00	20
	FY 2006	\$1,003,500.00	4	\$629,700.00	3	\$245,700.00	1	\$1,878,900.00	8	\$1,878,900.00	8
	FY 2007			\$87,300.00	1	\$328,800.00	2	\$416,100.00	3	\$416,100.00	3
Car Total		\$2,413,800.00	12	\$2,199,900.00	14	\$879,000.00	5	\$5,492,700.00	31	\$5,492,700.00	31
Grand Total		\$10,645,500.00	63	\$11,001,900.00	66	\$11,294,400.00	63	\$32,941,800.00	192	\$32,941,800.00	192

**PivotGrid with Filtered Data**

### Sorting

Sorting data enables you to quickly visualize and understand information better, organize and find the data that you want, and ultimately make more effective decisions. By default, PivotGrid will populate data in ascending order. Sorting order can also be changed.

		United States		United Kingdom		Germany		France		Canada		Grand Total	
		Amount	Quantity	Amount	Quantity	Amount	Quantity	Amount	Quantity	Amount	Quantity	Amount	Quantity
Car	FY 2009	\$2.00	2	\$1.00	1	\$4.00	4	\$2.00	2	\$0.00	0	\$9.00	9
	FY 2008	\$5.00	5	\$8.00	8	\$5.00	5	\$4.00	4	\$5.00	5	\$27.00	27
	FY 2007	\$13.00	13	\$9.00	9	\$7.00	7	\$6.00	6	\$8.00	8	\$43.00	43
	FY 2006	\$10.00	10	\$9.00	9	\$13.00	13	\$18.00	18	\$17.00	17	\$67.00	67
	FY 2005	\$33.00	33	\$40.00	40	\$31.00	31	\$37.00	37	\$38.00	38	\$179.00	179
Car Total		\$63.00	63	\$67.00	67	\$60.00	60	\$67.00	67	\$68.00	68	\$325.00	325
Bike	FY 2009	\$11.00	11	\$16.00	16	\$12.00	12	\$12.00	12	\$8.00	8	\$59.00	59
	FY 2008	\$29.00	29	\$21.00	21	\$29.00	29	\$19.00	19	\$21.00	21	\$119.00	119
	FY 2007	\$46.00	46	\$42.00	42	\$35.00	35	\$31.00	31	\$43.00	43	\$197.00	197
	FY 2006	\$67.00	67	\$72.00	72	\$71.00	71	\$71.00	71	\$86.00	86	\$367.00	367
	FY 2005	\$187.00	187	\$178.00	178	\$179.00	179	\$198.00	198	\$191.00	191	\$933.00	933
Bike Total		\$340.00	340	\$329.00	329	\$326.00	326	\$331.00	331	\$349.00	349	\$1,675.00	1,675
Grand Total		\$403.00	403	\$396.00	396	\$386.00	386	\$398.00	398	\$417.00	417	\$2,000.00	2,000

**PivotGrid with Sorted Data (Descending)**

**BI Grid for ASP.NET**

*Member Properties in a Grid*

OlapGrid provides an option for displaying member properties that contain basic information about each member in a tuple, including member name, parent level, and number of children. Member properties are available for all members in a given level.

	Gender	Marital Status	Email Address	Sales Amount Quota
[-] Ken J. Sánchez	Male	Single	ken0@adventure-works.com	\$112,745,950.00
[-] Brian S. Welcker	Male	Single	brian3@adventure-works.com	\$112,745,950.00
[-] Amy E. Alberts	Female	Married	amy0@adventure-works.com	\$23,077,600.00
Jae B. Pak	Female	Married	jae0@adventure-works.com	\$12,547,100.00
Rachel B. Valdez	Female	Single	rachel0@adventure-works.com	\$3,269,800.00
Ranjit R. Varkey Chudukatil	Male	Single	ranjit0@adventure-works.com	\$7,260,700.00
[-] Stephen Y. Jiang	Male	Married	stephen0@adventure-works.com	\$87,336,050.00
[-] Syed E. Abbas	Male	Married	syed0@adventure-works.com	\$2,332,300.00
Lynn N. Tsoflias	Female	Single	lynn0@adventure-works.com	\$2,332,300.00
Grand Total				\$112,745,950.00

*OlapGrid with Member Properties*

*Calculated Members*

OlapGrid can display user-defined dimensions and measures with a newly added API that defines and adds the dimensions and measures.

Calculated Members are classified into two types: **Calculated Measure** is a user-defined measure element created from an existing measure element; **Calculated Dimension** is a user-defined dimension element created from an existing dimension.

You can also create calculated members from existing calculated members and load a report with calculated members in OlapGrid.

	[-] Australia		[-] Canada		[-] France	
	Sales Range	Internet Sales Amount	Sales Range	Internet Sales Amount	Sales Range	Internet Sales Amount
[-] FY 2002	High	\$2,568,701.39	High	\$573,100.97	High	\$414,245.32
[-] FY 2003	High	\$2,099,585.43	High	\$305,010.69	High	\$633,399.70
[-] FY 2004	High	\$4,383,479.54	High	\$1,088,879.50	High	\$1,592,880.75
[-] FY 2005	Low	\$9,234.23	Low	\$10,853.70	Low	\$3,491.95
[-] FY 2007	Low		Low		Low	
Total	High	\$9,061,000.58	High	\$1,977,844.86	High	\$2,644,017.71

*OlapGrid with Calculated Members*

**BI Grid for Silverlight**

*Member Properties in a Grid*

OlapGrid provides an option for displaying member properties that contain the basic information about each member in each tuple, including member name, parent level, and number of children. Member properties are available for all members in a given level.

	Gender	Marital Status	Email Address	Sales Amount Quota
Ken J. Sánchez	Male	Single	ken0@adventure-works.com	\$112,745,950.00
Brian S. Welcker	Male	Single	brian3@adventure-works.com	\$112,745,950.00
Amy E. Alberts	Female	Married	amy0@adventure-works.com	\$23,077,600.00
Jae B. Pak	Female	Married	jae0@adventure-works.com	\$12,547,100.00
Rachel B. Valdez	Female	Single	rachel0@adventure-works.com	\$3,269,800.00
Ranjit R. Varkey Chudukatil	Male	Single	ranjit0@adventure-works.com	\$7,260,700.00
Stephen Y. Jiang	Male	Married	stephen0@adventure-works.com	\$87,336,050.00
Syed E. Abbas	Male	Married	syed0@adventure-works.com	\$2,332,300.00
Lynn N. Tsoulias	Female	Single	lynn0@adventure-works.com	\$2,332,300.00
Grand Total				\$112,745,950.00

***OlapGrid with Member Properties***

*Calculated Members*

OlapGrid can display user-defined dimensions and measures with a newly added API that defines and adds the dimensions and measures.

Calculated Members are classified into two types: **Calculated Measure** is a user-defined measure element created from an existing measure element; **Calculated Dimension** is a user-defined dimension element created from an existing dimension

You can also create calculated members from existing calculated members, and load reports with calculated members in OlapGrid.

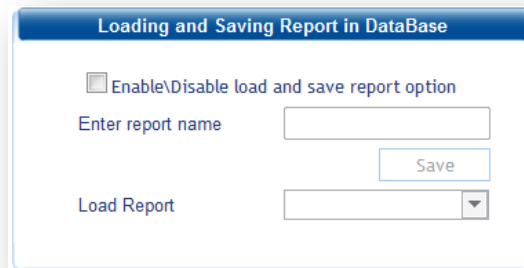
	Australia		Canada		France	
	Sales Range	Internet Sales Amount	Sales Range	Internet Sales Amount	Sales Range	Internet Sales Amount
FY 2002	High	\$2,568,701.39	High	\$573,100.97	High	\$414,245.32
FY 2003	High	\$2,099,585.43	High	\$305,010.69	High	\$633,399.70
FY 2004	High	\$4,383,479.54	High	\$1,088,879.50	High	\$1,592,880.75
FY 2005	Low	\$9,234.23	Low	\$10,853.70	Low	\$3,491.95
Total	High	\$9,061,000.58	High	\$1,977,844.86	High	\$2,644,017.71

***OlapGrid with Calculated Members***

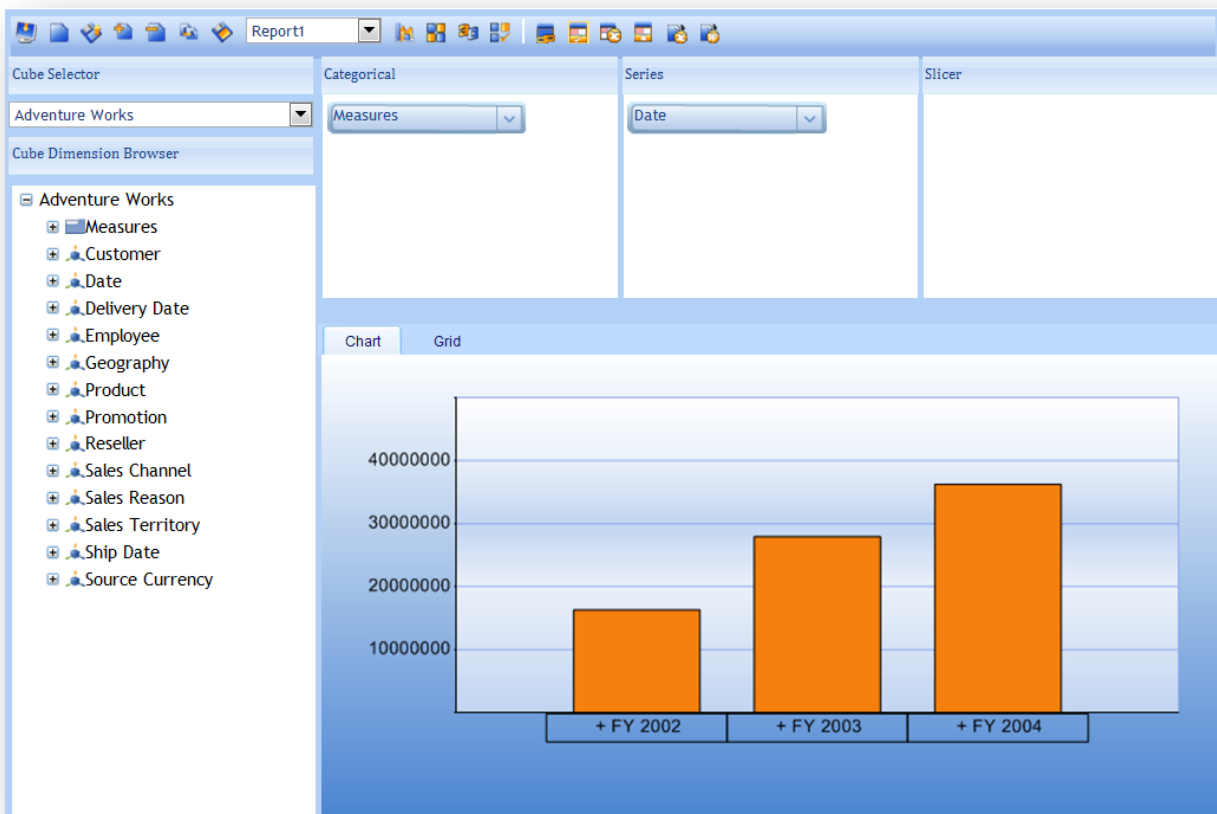
## BI Client for ASP.NET and WPF

### Report as a Stream

Essential OLAP Client for ASP.NET and WPF allows you to store the current session of a report set as a stream anywhere you desire. For example, the stream can be stored in a database, allowing you to later load the saved stream and populate the control.

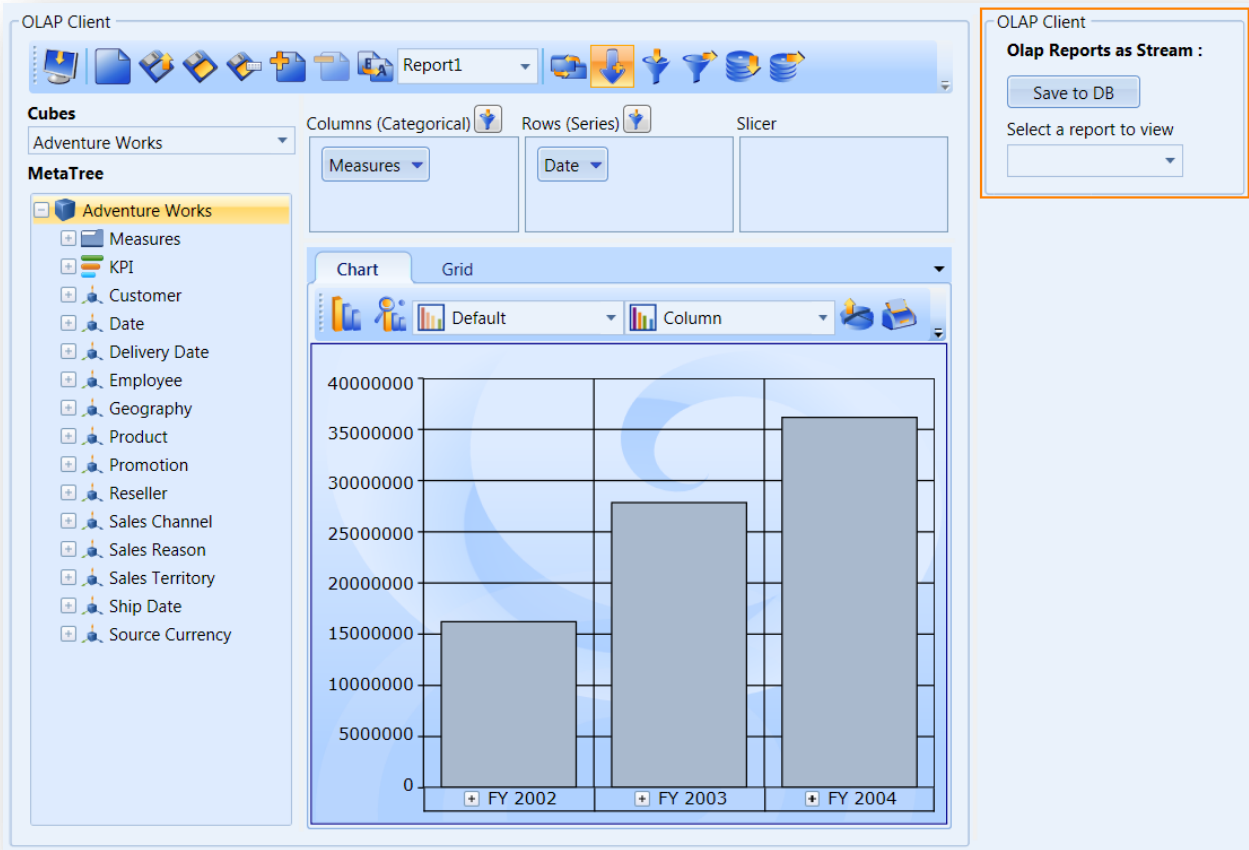


### Loading and Saving as a Stream in ASP.NET



### Report as a Stream in ASP.NET

# What's New for 2010 Volume 3: Essential Studio Business Intelligence



**Report as a Stream in WPF**